

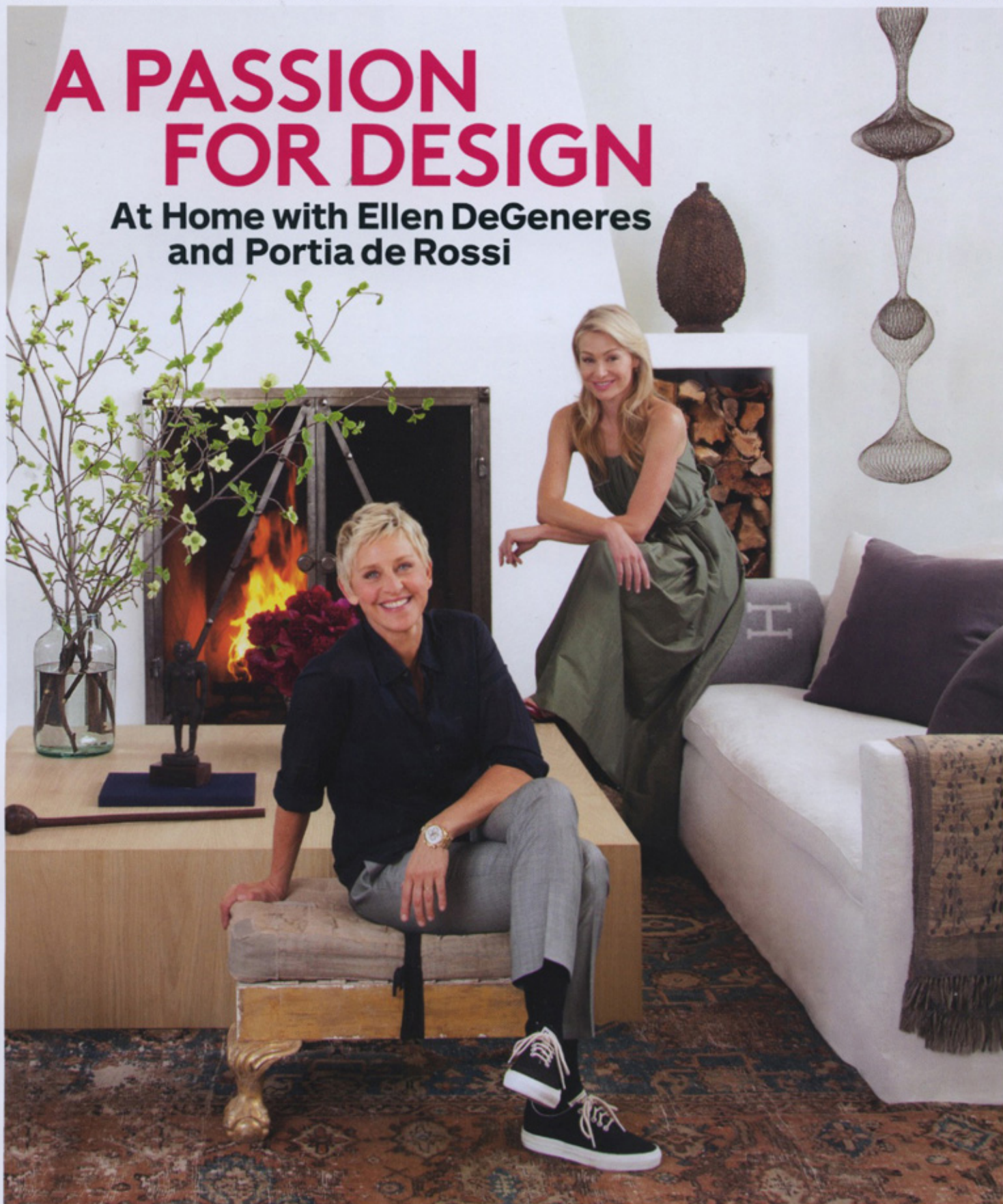
ARCHITECTURAL DIGEST

THE INTERNATIONAL DESIGN AUTHORITY

NOVEMBER 2011

A PASSION FOR DESIGN

At Home with Ellen DeGeneres
and Portia de Rossi





156 A FINE VINTAGE

Admired for their Summer Hill collection of fabrics and furnishings, Don and Rela Gleason unveil their foremost creation to date: a sophisticated house nestled into a Napa Valley vineyard.

By Therese Bissell
Architecture by
McAlpine Tankersley Architecture
Interior design by Rela Gleason

168 FRESH PERSPECTIVE

For a challenging site with sweeping views of the Hudson Valley, gallerist Sean Kelly and his wife commission a retreat as bold as the artists he represents.

By Fred A. Bernstein
Architecture and interior design by
Toshiko Mori Architect

176 MADE TO MEASURE

In Manhattan, an apartment is tailored to maximize major paintings and serious Continental antiques—without losing all-American comfort. By Rob Haskell

Architecture by Peter Pennoyer Architects
Interior design by Michael S. Smith Inc.

184 ARTIST IN RESIDENCE

Joy de Rohan-Chabot oversees a French château where her metal and glass works live amid the treasures of previous generations.

By Dana Thomas

192 LUSH LIFE

A verdant corner of São Paulo parts to reveal a modern villa with clean lines and gutsy details.

By Michael Cannell
Architecture and interior design by
Isay Weinfield



Clockwise from top left: Ellen DeGeneres and Portia de Rossi relax. A Hudson Valley triumph by architect Toshiko Mori. Shelton, Mindel & Assoc. shakes up a traditional paneled library. Chairs from Liz O'Brien Editions.

For the Hudson Valley, New York, getaway of Mary and Sean Kelly, Toshiko Mori Architect stacked an upper story clad in aluminum-foam panels atop a glass-walled ground floor. The cast-iron figure is Antony Gormley's sculpture *You*. For details see Sources.

FRESH PERSPECTIVE

When a Manhattan art-world couple fell in love with a breathtaking Hudson Valley view, they turned to architect Toshiko Mori to create a house bold enough to match it

TEXT BY FRED A. BERNSTEIN PHOTOGRAPHY BY WILLIAM WALDRON PRODUCED BY HOWARD CHRISTIAN





Manhattan gallery owner Sean Kelly represents Marina Abramović, known for her haunting performance pieces, and more than a dozen other artists whose works arouse powerful emotions. He is no stranger to theatricality.

So almost a decade ago, when Sean and his wife, Mary, bought a 16-acre plot north of New York City because of its spectacular Hudson Valley views, he envisioned building a house that, like a work of art, would reveal itself gradually and in unexpected ways. From the outside it would have the ephemeral quality of a cloud passing by. It would be a structure, he says, "that wouldn't quite come into focus, that would almost dissolve when you looked at it against the sky."

Inside, he wanted rooms that would make the most of the vista, sometimes by keeping it tantalizingly out of sight. The entry hall, for instance, should be windowless—"a brutal space," Sean says, producing an effect of delayed gratification, giving the views from the living and dining areas extra impact.

The local broker who sold the couple the land told them that, because of its steep topography and rocky ground, it would be exceedingly difficult to build on. "Reverse psychology," says Sean, who relished the challenge of overcoming the site's design obstacles. He and Mary picnicked on the property, getting to know the terrain, discussing how to orient the house, and watching storms roll in across the valley while their terrier chased squirrels.

The pair also traveled to Iceland, Japan, Switzerland, and other countries to look at architecture—but they generally avoided taking pictures of buildings they liked, since their goal was not to copy particular details but to capture feelings. "We didn't have a photo bank," Sean says. "We had a memory bank."

The obvious choice to design the house was their longtime friend Toshiko Mori, the Manhattan architect and

Right, from top: A work on paper by Rebecca Horn is displayed against walnut paneling in the living area; the chair is by Oskar Zieta. The Kellys' terriers, Molly (left) and Finnegan, in a reading corner with wicker seating by Marc Newson and a Poul Kjærholm PK 64 cocktail table.

Opposite, from top: The living area's Hilton sofas by Minotti, with pillows by Judy Ross Textiles, face a pair of PK 57 cocktail tables by Kjærholm, one topped with Jeff Koons's Balloon Dog porcelain plate; the painting is by Callum Innes. The suspended sofa by Kjærholm and the Antony scone by Serge Mouille are both 1950s; beneath the framed work, *Void* by Gormley, is a circa-1940 Penguin Donkey bookshelf by Ernest Race and an African sculpture.



UPSTAIRS IS WHAT SEAN KELLY
CALLS "THE INTELLECTUAL
HEART" OF THE HOUSE—
A LIBRARY THAT COULD EASILY
BE A SMALL MUSEUM.



Left, from top: Vintage Arne Jacobsen seating—a set of Grand Prix chairs and a Giraffe armchair—surrounds a minimalist dining table designed by Mori and Peter Superti, which is set into a polished-concrete floor; the centerpiece is a sculpture by Jeff Zimmerman. The kitchen features a Sub-Zero refrigerator, a Miele cooktop, and a Voda counter stool by Design Within Reach; the dining table and chair are George Nelson designs by Herman Miller. **Opposite, clockwise from top:** The upstairs library showcases works by Marcel Duchamp and Joseph Beuys, and a collection of books, including first editions by James Joyce; the small green figures on the shelf are sculptures of the Kellys by Karin Sander. The birch stairway appears to float free of its enclosing walls; the recessed hand-rail was a key design decision. The Kellys and their dogs in front of a wall painting by Birgir Andrésson.



Harvard architecture professor known for creating buildings that are at once delicate-looking and intensely practical. With Mori, "you don't have leaky roofs or walls that can't stand up to howling gales or eight feet of snow," says Sean admiringly.

"I like hard problems," acknowledges Mori, who visited the site and sketched a simple two-story building with an angled entry hall. The ground floor would be almost entirely glass, while the second floor would be intriguingly opaque, with, Mori says, "windows placed in relation to the human body," framing views where the Kellys, or their grown children, Lauren and Thomas, might be "standing, sitting, or lying down."

For the exterior, Mori selected a cladding of aluminum-foam panels, normally employed in industrial settings. The panels, Mori explains, are reflective enough to respond to light and weather conditions but have an irregular texture that "rewards slow looking."

Construction took nearly two years and resulted in a 6,500-square-foot home that bears an intimate domesticity. None of the rooms feel like cavernous galleries. "Even when I'm here on my own it never seems too large," Mary says. "Toshiko got the proportions exactly right."

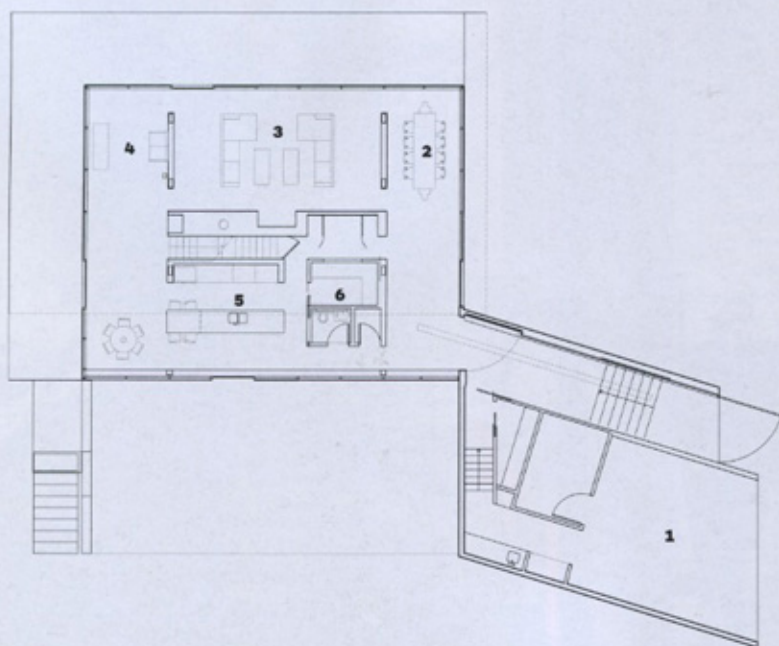
Most of the public areas are situated downstairs, including a kitchen with cabinetry that Mary insisted be a deep sienna. The space's red glow, she says, "makes it a great setting when we are preparing the evening meal, ideally with a glass of red wine."

Upstairs, surrounded by bedrooms, is what Sean calls "the intellectual heart" of the house—a library that could easily be a small museum. One wall is devoted to





First Floor



Second Floor



The Floor Plan

As designed by architect Toshiko Mori, this two-story home provides for open circulation at the ground level, while the upstairs situates private spaces around a central library.

1. Garage
2. Dining area
3. Living area
4. Reading area
5. Kitchen
6. Pantry
7. Bedroom
8. Bedroom
9. Bedroom
10. Master bedroom
11. Library
12. Office



pieces by Marcel Duchamp, another to Joseph Beuys. Several shelves hold the Kellys' collection of James Joyce materials, including letters, manuscripts, and first editions. The couple also invested in a complete set of Penguin Classics—1,082 volumes—so guests can curl up with books that aren't precious objects.

Instead of hiring a decorator, the husband and wife partnered with Mori on the interiors. Mary wanted comfortable seating, like twin sectional sofas by Minotti, while other furnishings were chosen for their sculptural qualities—among them a suspended sofa by Poul Kjærholm (Sean represents the Danish designer's estate), a pair of Giraffe armchairs by Arne Jacobsen from his iconic SAS Royal Hotel, and lighting by Serge Mouille.

Artists from Sean's inner circle, including Abramović, Rebecca Horn, Callum Innes, and Iran do Espírito Santo, are showcased on the walls. But as if to prove that this is a retreat from his New York gallery and not an extension of it, Sean also opted to display pieces by talents he has never represented. One of these is a large wall painting in the entry by the Icelandic artist Birgir Andrésson that reads ALL THIS AND HEAVEN AS WELL. The couple made it a focal point, Sean says, because it is "the perfect statement for how we feel about the house." □

Clockwise from top left: A guest room features a built-in sycamore bed by Mori and a photograph by Douglas Gordon. The master bath is tiled in limestone and includes a Starck tub by Duravit with Vola fittings; the stool is by Kjærholm, and the work on paper at the end of the bath is by Peter Liversidge. Limited-edition *Je t'aime* pillowcases by Louise Bourgeois from the Tate Modern grace the master bedroom; the work on paper is by Richard Long, and the bench at the foot of the bed is by Nelson for Herman Miller. **Opposite:** The master bedroom includes a Kjærholm wicker chaise longue and low table.



trade; therien.com. **On chairs**, Bermuda linen by Summer Hill Ltd.; summerhill.com. **PAGE 161:** In sunroom, **San Francisco tray table** and **Yankee wing chair in Napa linen blend**, all by Summer Hill Ltd.; summerhill.com. **Floor lamp** by Galerie des Lampes from Summer Hill, Chicago; 312-467-6860. In dining alcove, **custom-made Alcove banquette in Carriage leather**, both by Summer Hill Ltd. **PAGE 163:** In kitchen, **sconces** custom made by the Urban Electric Co.; urbanelectricco.com. **Custom-made pendant lights** from Summer Hill Ltd.; summerhill.com. **Refrigerator and freezer columns**, both by Thermador; thermador.com. **Range** by Wolf; subzero-wolf.com. **Television** by Samsung; samsung.com. **Cole ottoman in Carriage leather**, both by Summer Hill Ltd. **PAGE 164:** In guest suite, **Italian bed** by Michael Taylor Designs, to the trade; michaeltaylor.com. In guest room, **bed curtains of Edie cotton** by Summer Hill Ltd.; custom made by Laurel Sprigg Inc.; laurelsprigg.com. **Faux-fur throw** by Tessuti Uno from Summer Hill, New York; 212-935-6376. **Glen Plaid blanket** by Himalayan Cashmere Co. from Flats; flatsnapavalley.com. **PAGE 166:** In master bedroom, **custom-made Rela bed** by Andrew Fisher of Fisher Weisman; fisherweisman.com. **Antique suzani** from Suzanne Tucker Home, to

the trade; suzannetuckerhome.com. **Custom-made mantel** by Atelier Jouvence Custom Stoneworks; ajstoneworks.com. **Townhouse love seat and Montgomery wing chair**, both by Summer Hill Ltd.; summerhill.com. **Antique armchair** from Heather & Co.; heatherandcompanyantiques.com. In master bath, **mirrors** custom made by McLain Wiesand from Summer Hill, New York; 212-935-6376. **MEM sink fittings** by Dornbracht; dornbracht.com. **Sheepskin rugs** by the Hide & Leather House; hidehouse.com. **PAGE 167:** **Ofuro tub** by Sonoma Cast Stone; sonoma-stone.com. **Cindie ottoman** by Summer Hill Ltd.; summerhill.com; **upholstered in Dolce cotton-alpaca** by Suzanne Tucker Home, to the trade; suzannetuckerhome.com. **FRESH PERSPECTIVE** **PAGES 168-75:** **Architecture** by Toshiko Mori Architect; tmarch.com. Sean Kelly of Sean Kelly Gallery, New York; skny.com. **PAGE 170:** **Hilton sofas** by Minotti; minotti.com. **Seeds pillows** by Judy Ross Textiles; judyrosstextiles.com. **PAGE 172:** In kitchen, **refrigerator** by Sub-Zero; subzero-wolf.com. **Cooktop** by Miele; mieleusa.com. **Voda counter stool** by Design Within Reach; dwr.com. **George Nelson Swag Leg table and chair** by Herman Miller; hermannmiller.com. **PAGE 175:** In master bath, **tub** by Philippe Starck for Duravit; duravit.com. **Bath fittings**

by Vola; vola.com. In master bedroom, **George Nelson Platform bench** by Herman Miller; hermannmiller.com. **MADE TO MEASURE** **PAGES 176-83:** **Architecture** by Peter Pennoyer Architects; ppape.com. **Interior design** by Michael S. Smith Inc.; michaelsmithinc.com. **PAGES 176-77:** **Antique console table** from H. M. Luther; hmluther.com. **Antique fauteuils** from Mallett; mallettantiques.com. **Antique mantel** from Chesney's; chesneys.com. **Hall armchairs** by Jonas, to the trade; jonasworkroom.com; **upholstered in Barberini silk** by Jagtar; jagtar.co.th. **Jewel cocktail table** by Magni Home Collection, to the trade; magni.com. **PAGE 178:** **Antique mirrors** from Gerald Bland Inc.; geraldblandinc.com. **Crillon sofa** by Mattaliano, to the trade; mattaliano.com. **PAGE 179:** In entrance hall, **Lustre Tourbillon light fixture** by Hervé Van der Straeten from Ralph Pucci International, to the trade; ralphpucci.net. In living room, **on sofa**, **Surin silk** by Jim Thompson, to the trade; jimthompsonfabrics.com. **Antique table** from H. M. Luther; hmluther.com. **PAGE 180:** **Antique chandelier** from Perrin Antiquaires; galerieperrin.com. **Antique dining table** by Maison Jansen from M. S. Antiques; msdecorative.com. **Louis XVI-style chairs** by Quatrain, to the trade;

therien.com. **Antique Malayer rug** from Mansour; mansourrug.com. **PAGE 181:** In kitchen, **Greek Key chairs** by Jonas, to the trade; jonasworkroom.com. **Tree table base** by Craig Van Den Brulle; craigvandenbrulle.com. **Berling ceiling lights** by Ralph Lauren Home; ralphlaurenhome.com. In media room, **Saint Germaine sofa** by Jasper; michaelsmithinc.com; **upholstered in Chevalier silk blend** by Rose Tarlow, to the trade; rosetarlow.com. **PAGE 182:** In master bedroom, **antique mirrors** from H. M. Luther; hmluther.com. **Guirlande de Lierre bed linens** by D. Porthault; dporthaultparis.com. In bath, **fixtures** by P. E. Guerin; peguerin.com. **Tub** by Kohler; kohler.com. **PAGE 183:** **Custom-made Plum Blossom wall covering** by de Gournay; degournay.com. **On chairs**, **Piumette cotton** by Fortuny, to the trade; fortuny.com. **ARTIST IN RESIDENCE** **PAGES 184-91:** **Painted glassware** by Joy de Rohan-Chabot available at Dior, Paris; 011-33-1-40-73-73-73. **One-of-a-kind furnishings** by Joy de Rohan-Chabot; joyderohanchabot.com. **LUSH LIFE** **PAGES 192-99:** **Architecture and interior design** by Isay Weinfeld; isayweinfeld.com. **PAGES 194-95:** **Antefocus fireplace** by Focus; focus-creation.com. **PAGE 196:** **Cooktop** by La Cornue; lacornueusa.com. □

Promotion

Love to Cook? Hate Hard Flooring?

Make the time you spend in the kitchen more enjoyable with a GelPro® Mat. Made with a shock absorbing, 100% gel core, GelPro Mats are great for people with back or foot pain or for those who just love to cook. As seen on Rachael Ray, HGTV and Food Network. Available in more than 600 combinations of patterns, colors and sizes, including Designer Sizes as large as 3 feet by 12 feet. To order your GelPro Mat, visit GelPro.com or call 1-866-GEL-MATS (435-6287). Visit our online clearance center for incredible savings! Stand in Comfort®.



STYLE WATCH



Handcrafted Portraits & Holiday Gifts

Turn your best photos into stunning portraits, made by our American artists. Selected by Oprah as a favorite gift. 2-7 days delivery & international shipping. Call 1-877-728-9278 or view our work at www.AllPopArt.com/ad.